



Year 3 Curriculum

RE

Knowledge Map - Pentecost 2



Maths

Children will continue learning 3x 4x and 8x

tables as well as corresponding division facts.

Please revisit and consolidate 2x, 5x and 10x tables from Year 2.

Key Concepts covered this half term

This half term we will be revisiting all four operations, addition, subtraction, multiplication and division in aims of developing fluency and being able to identify which operation is needed in word problems.

We will work with an increasing range of measures, including those expressed as mixed units (eg 1kg 800g).

We will also be exploring 3D shapes



and their properties.

PE



PE for Year 3 will take place on Thursday for St Kizito and St Francis.

There will also be an additional lesson taking place on Friday for St Kizito and Wednesday for St Francis. Please remember to wear your PE kit to school on these days. Please ensure that hair is tied up at all times and earrings are removed before the lesson.

This half term our RE topic focuses on

'Choices'

In the Pentecost term the children will be learning about The importance of conscience in making choices.

Your conscience is a little voice inside you that helps you know the difference between right and wrong. It helps you make good choices, like being kind to a friend, telling the truth, or saying sorry if you've hurt someone. God gave everyone a conscience so we can live like Jesus—with love, kindness and fairness.



Supporting maths at home

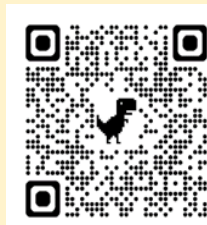


MFL

Our topic in French this half term is“

Bon anniversaire!”

Which includes the names of foods, dates and numbers 21-31.



English

This term the children will be learning to create a non-chronological report about a festival or celebration of their choice. They will discuss the audience and purpose of the writing for this unit.

Children will explore the narrative Iron Man and they will read, discuss role play and watch an extract from the first chapter of The Iron Man. They will explore the genre/purpose and the author's intended effect on the reader by exploring vocabulary, language and grammar used to describe the Iron Man and how this has been done in third person.

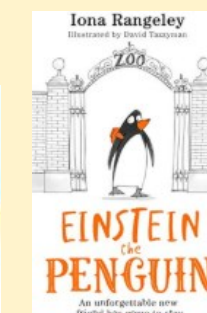
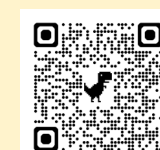
Children discuss, read and perform 'tongue twister' poetry by Joseph Coelho. They are introduced to the audience and purpose of their final piece of writing.



Our class novels for this half term are...

3 St Francis 'Einstein the Penguin' - Iona Rangeley

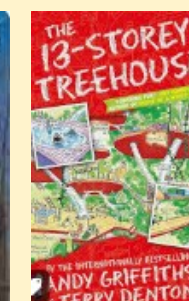
3 St Kizito 'The Iron Man' - Ted Hughes



In our guided reading sessions here are some of the fabulous books we will be exploring this half term!

The 13 Story Treehouse by Andy Griffiths and Terry Denton

The Lost Happy Endings by Carrol Ann Duffy



Our School Mission Statement

Jesus at the Heart of all that we do.

Children continue to have an opportunity to choose a library book from our well stopped range within school. As well as this, children will also receive a reading book matched to their reading age. Please remember to read daily and record in reading records.

Exploring colour with Vincent Van Gogh

Art Techniques: Tinting, Shading, Tertiary Colours, Warm and Cool Colours

Sticky Knowledge

- Vincent Van Gogh was a famous artist who used colour and brushstrokes to show his feelings.
- You can make tertiary colours by mixing other colours together.
- Warm colours feel bright and happy; cool colours feel calm or sad.

Key Artworks to Study

Starry Night - example of cool colours and swirling brushstrokes.

Sunflowers - examples of warm colours and thick paint.

The Bedroom—showing use of warm and cool colours in a calm scene .

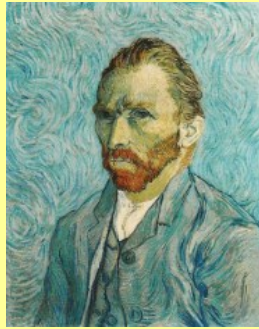
Key Vocabulary

Tint - A colour made by adding white to make it lighter.

Shade—A colour made by adding black to make it darker.

Tertiary Colour—A colour made by mixing a primary and secondary colour .

Warm Colours - Colours like red, orange , yellow they feel warm like the sun .



Geography— A regional study

Sticky Knowledge

Luton is a town in Bedfordshire and has a large population.

The River Lea flows through Luton.

Luton has a mix of human (buildings, roads, airports) and physical (river, hills, parks) features:

Luton is an important transport hub.

We can use field work to investigate and understand our local area.



Key Vocabulary

Human Feature—A part of the environment made or changed by people.

Physical Feature -

A natural part of the environment .

Fieldwork—Using outdoor investigation to find about geography .

Landmark—an easily recognised feature of a place .

Urban—Related to towns.

RSE

Created to Live in Community

We will be exploring the childrens individual relationships with the different communities that make up the wider world. We will be thinking about how people are social by nature and that we are all called to love each other .

Lord, open our hearts to see you in each person we encounter.

Help us

to build bridges of friendship across differences, so that peace can flourish.

Fill us with courage and hope as we journey with you into the next phase of our lives.

Amen.



Key dates:

3 St Francis Class Mass

**Tuesday June 10th—
10.30am**

3 St Kizito Class Mass

Tuesday July 8th—10.30am

**Yr 3 School trip to Windsor
Castle Friday 27th June**

Science

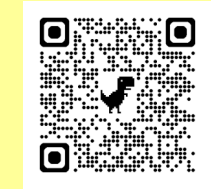
Light and Shadows



This half term we will be learning all about light and shadows

Sticky Knowledge

- Dark is the absence of light.
- Shadows are formed when an opaque object blocks the light.
- To know that light can be reflected from some surfaces.
- We should protect our eyes and skin from the sun.



Key Vocabulary

Light source - A light source is any object that produces and emits light.

Transparent - objects that allow light to completely pass through them.

Translucent - Objects that allow some light to pass through them .

Opaque - objects that do not allow light to travel through them.

Shadow - Shadows are formed when light from a source is blocked by an opaque

Object.

Reflect - When light from an object is reflected by a surface, it changes direction. It bounces off the surface at the same angle as it hits it.

RSE

Created to Live in Community
We will be exploring the childrens individual relationships with the different communities that make up the wider world. We will be thinking about how people are social by nature and that we are all called to love each other

Please ensure you have a named water bottle in school each day and this goes home daily to be washed.

Our School Mission Statement

Jesus at the Heart of all that we do.